

The background of the image shows two tennis rackets and a tennis ball on a blue court. The rackets are positioned diagonally, with their heads pointing towards the bottom left. The tennis ball is a bright yellow-green color and is located near the bottom right of the rackets. A tennis net is visible in the background, creating a grid pattern. The entire scene is overlaid with a semi-transparent blue filter.

Skylab Exhibition

AUGUST 2023

Minter Dial Analysis

skylab

Exhibition Match Analysis

Alongside the access in the analytics platform, here are a selection of headline statistics and insights into the exhibition at Rocks Lane.

Please consider the small sample size so expect some variation but hopefully a good indication of the insights we can quickly create with our tools and expertise in Padel.

To give you a benchmark measure, we have included data from the FIP World Championship Final 2022.

Headline Match Statistics

Benson / Dial 1 – 2 Warren / Noir

- Benson/Dial points won: 97
- Lenoir/Warren points won: 96
- Longest rally: 37 shots (World Comparison: 75)
- First serve in %: 76% (World Comparison: 92%)

Match Summary

Benson / Dial

97

3 / 10

17 / 13

20 / 32

Benson 86% (63%)

Dial 70% (77%)

Benson 100% (29%)

Dial 100% (69%)

6-4 / 2-6 / 7-6 (5)

Points Won

Break Points

Winners

Errors

1st Serve In (Win %)

2nd Serve In (Win %)

1hr 28min

Le-Noir / Warren

96

2 / 6

6 / 24

33 / 24

Le-Noir 78% (63%)

Warren 71% (69%)

Le-Noir 100% (64%)

Warren 100% (53%)

Match Summary

Rocks Lane

7.3

7.9

7.1

6.9

Average Rally

Set 1

Set 2

Set 3

FIP WC 2022

12.2

12.5

12.0

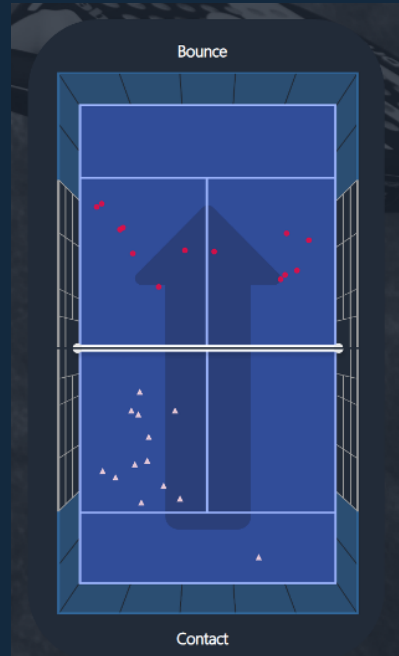
12.1

Exhibition Match Analysis

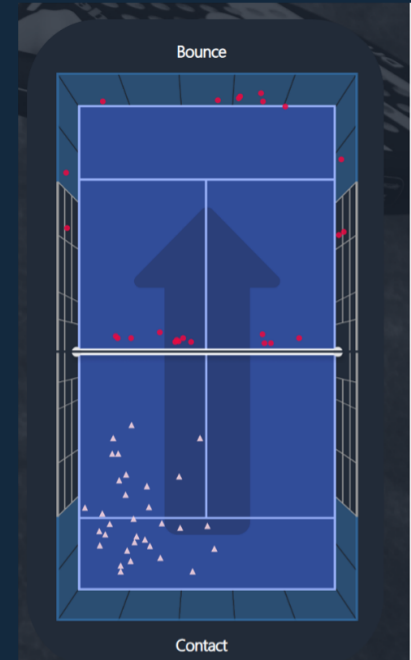
Minter Dial Statistics

- 45 times hit final shot
- 13 winners (29%)
- 32 errors (71%)

World Comparisons: 43% Winners,
57% Errors



Winners



Errors

Final Shot locations

Winning Shots

A selection of Minter's winning shots



[Video Link](#)

Serve / Return Analysis

Serve

- 1st Serve In: 70% (World Comparison: 92%)
- 1st Serve in Win: 77% (World Championship Average: 58%)

Serve Deuce

- Favoured T serve on Deuce: 10 serves down T (67% of 1st serves in)
- World Championship favoured wide serve on deuce: 166/236 1st Serves in (70%)

Serve Ad

- Favoured Wide serve on Ad: 11 serves Wide (73% of 1st serves in)
- World Championship favoured wide serve on Ad: 177/222 1st Serves in (80%)

Return

- Most common serve faced: Wide serve (18)
- Return in %: 86%
- 1st Serve return points won (when Minter returning): 48%
- Return directions: Line 48% (15), Cross 52% (16)
- Return Errors: 5

Ball 3

Ball 3

- Attacking situations on serve: 7 (4 hit by Minter)– 18% attacking (worlds: 19%)
- Defensive situations on serve: 12 (31%)– Worlds (16%)
- Ball 3 split: Server (62%), Server's Partner (38%)
- World Championship ball 3: 62% hit by server, 38% hit by servers' partner

Thank you

skylab